

### Teahouse Gardens

The garden is an integral part of a teahouse. Its purpose is to prepare one for participation in a tea ceremony by providing a serene natural setting. After entering the gate to the garden, participants sit in a covered waiting area for the tea ceremony to begin. At the invitation of the tea master, participants wash their hands and mouth from water in a rock basin and proceed to the teahouse on stepping stones, pausing on the larger stones for a brief moment of reflection. They leave their foot apparel at the entrance, before stooping to pass through the small "crawl door." These features are illustrated by these photographs taken at Urakuen in Inuyama, Aichi Prefecture, in which Jo-an (a small Sōan style teahouse) and Shōdenin (a large Shoin style building), as well as several other buildings, are located, having been moved there in 1970.

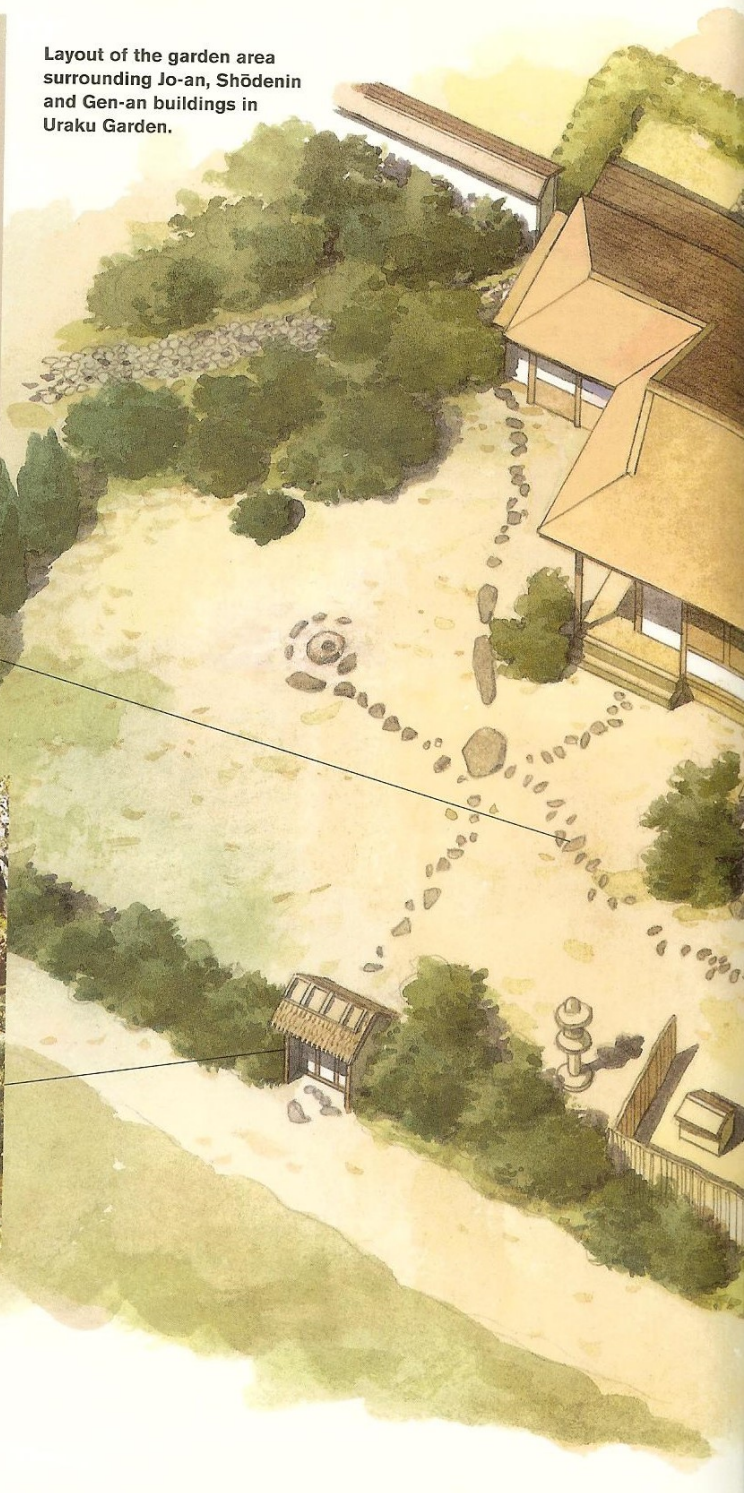
Layout of the garden area surrounding Jo-an, Shōdenin and Gen-an buildings in Uraku Garden.



The stone walkway leading to Jo-an Teahouse.



The Kayamon Gate is constructed of poles covered with a grass roof. On top of the roof is a bamboo and log frame designed to help hold the grass in place.



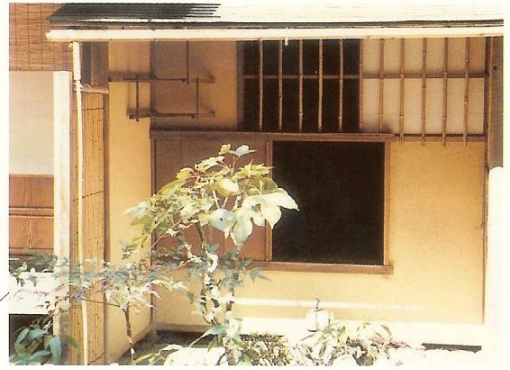


Shōdenin Shoin

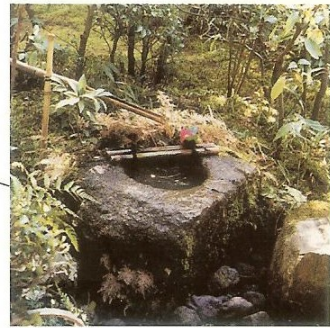
Gen-en Teahouse

Jo-an Teahouse

The waiting place (*machiiai*) consists of a bench in a simple enclosure with mud walls, covered on the inside with rice paper to protect one's clothing.



The entrance area to the Gen-an, where shoes are left before entering the teahouse through the small crawl door. Above and to the left of the door is a rack where, in the old days, samurai would leave their swords. Above the door is an opening covered with a bamboo lattice that can be adjusted by a sliding window constructed of a wood frame covered with rice paper.



A rock basin (*tsukubai*) fed by water running through a bamboo tube.

